



# OKI proColor™ pro900DP

Brilliant, consistent production color and customized output—including envelopes

**OKI®**



# OKI proColor™ pro900DP



A digital press for spectacular short-run, on-demand print jobs.

Your customers frequently ask you to print short-run quantities with variable data on a wide range of formats—including envelopes—in very, very specific colors. You need a reliable asset on the shop floor to handle that.

The new **OKI proColor™ pro900DP** digital color press from Oki Data Americas, Inc., is the answer for spectacular color and great short-run performance. It features:

- High-capacity HD Color production printing
- Embedded EFI® color technology for consistency and accuracy
- Media flexibility and cost-efficiency

**The pro900DP: the perfect combination of brawn and finesse.**

#### OKI proColor™ pro900DP Highlights:

Embedded EFI® Fiery® System 8e Controller with SmartRIP® technology for fast, automated color workflow

Single Pass Color™ digital technology—straight-through print path handles up to 300 gsm, tabloid-extra sheets (12" x 18"), and banners up to 4' long

High-productivity print speed—up to 36 ppm in Color and 40 ppm Monochrome<sup>1</sup>

High Definition (HD) Color printing technology for increased color depth and richer hues—even on ordinary paper

True 1200 x 1200 dpi print resolution for clear, sharp text and graphics

Designed for short-run production: High-Capacity Lift holds up to 4,000 sheets of 20 lb. bond paper

2-Year On-Site warranty<sup>2</sup> for low operating costs



<sup>1</sup> Published performance results based on laboratory testing. Individual results may vary.

<sup>2</sup> Available in the U.S. only.



## High-capacity color printing

The OKI proColor™ pro900DP is a color-matching digital printer from Oki Data Americas, Inc., with a twist: it's also a short-run production press that handles tabloid-extra (12" x 18") sheets, a wide range of specialty and custom media, and many types of envelopes, like a dream.

While that means the pro900DP will help you cut on-demand jobs from hours to minutes, you still have to meet your customers' demands for vibrant and accurate color output. The pro900DP is the perfect solution for satisfying the needs of color-centric clientele.

## EFI® technology for consistency and accuracy

The pro900DP controller is an EFI® Fiery® System 8e. Along with the EFI Command WorkStation™ utility, it provides print control and job management functionality to optimize document workflow and ensure consistently exceptional results. With EFI technology, you can manage or preview print jobs in the queue, balance the workflow of networked devices, manage color profiles, and save templates on the 40 GB hard disk drive for faster processing and re-printing of jobs.

The printer delivers consistent professional-quality color through OKI's HD Color printing technology, automatically calibrating colors, making color corrections on the fly, and supporting EFI Spot-On®, PANTONE®, SWOP®, Japan Color, Euroscale and custom ink simulations. That, and up to 1200 x 1200 dpi resolution, enables the pro900DP to deliver fine details and stunning color depth, whether on glossy stock or even ordinary paper.

## Media flexibility and cost-efficiency, too

The pro900DP Series is the ideal solution for producing a wide range of documents on a variety of paper weights and sizes. Single Pass Color™ technology and the straight-through paper path allow for faster color and monochrome print speeds, minimal paper jams, and smooth handling.

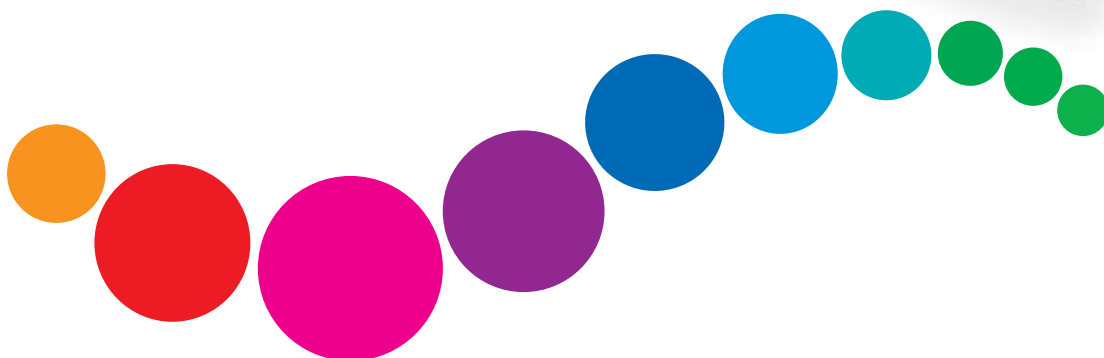
Features like Auto Media Detect automatically adjust the printer to your required media type, and Auto Color Balance ensures that output remains consistent from start to finish. And, with the cost of a black & white page on the pro900DP lower than typical office equipment, you can also use it for all of kinds of business documents, like annual reports, complete with variable data customization and full-color covers—on cover stock.

## The answer to your short-run color printing needs

The pro900DP from Oki Data Americas, Inc.: high capacity and high quality—the right Digital Press for your demanding, color-sensitive short-run printing needs.



Single Pass Color™ technology and straight-through paper path handles thick paper stock and banner sheets.



## Specifications

|                       |                               |  |
|-----------------------|-------------------------------|--|
| <b>Performance</b>    | Print Speed <sup>1</sup>      | Letter/A4 – up to 36 ppm Color, 40 ppm Mono; Tabloid/A3 – up to 19 ppm Color, 21 ppm Mono  |
|                       | Time to 1st Page <sup>1</sup> | 10.5 sec. Color, 9 sec. Mono   |
|                       | Warm-up Time                  | 110 sec. or less from Power On   |
|                       | Processor                     | 1 GHz Intel® Celeron® M  |
|                       | Monthly Duty Cycle            | Average: 5,000–15,000 pages; Max: 150,000 pages  |
| <b>Print Quality</b>  | Resolution                    | HD Color Technology: 1200 x 1200 dpi   |
|                       | Color Matching                | EFI® Fiery® ColorWise™ Pro Tools; EFI ICC Color Profiles; Color calibration with optional EFI color profiling kit; PANTONE® calibrated   |
| <b>Typefaces</b>      | Printer Fonts                 | 86 scalable PCL® fonts; 10 TrueType® fonts; 136 Adobe® PostScript® Type 1 fonts; 1 bitmap font; OCR A/B; USPS barcode  |
| <b>Compatibility</b>  | Printer Languages             | PCL® 5c, PCL XL (Color), Adobe PostScript 3™ with PDF Direct Print (v1.7)  |
|                       | Connectivity                  | Hi-Speed USB 2.0 and 10 Base-T/100 Base-TX/1000 Base-T Ethernet with internal Web Server   |
|                       | Operating Systems             | Windows® 7, Vista® (32-/64-bit); XP Professional (32-/64 bit), XP Home; Server 2003 Standard/Enterprise/Datacenter Editions; Server 2003 x64 (SP1); 2000 Professional (SP4 or later); 2000 Server (SP4 or later); 2000 Advanced Server (SP4 or later); Mac® OS X PowerPC 10.3.9–10.5, OS X Intel 10.4.4–10.5 |
|                       | Network Protocols             | TCP/IP; NetWare®; EtherTalk  |
| <b>Utilities</b>      | Included with Printer         | Swatch Utility; EFI Command Workstation™, EFI Spot-On™, EFI Job Monitor, EFI Hot Folders™; PDF Direct Print  |
| <b>Memory</b>         | RAM (Standard and Max)        | 1,024 MB   |
|                       | Hard Disk Drive               | 40 GB Standard   |
| <b>Media Handling</b> | Paper Capacity Tray 1         | 530 sheets   |
|                       | High-Capacity Lift            | 4,000 sheets/envelopes   |
|                       | Paper Sizes                   | Tabloid extra (12" x 18"), tabloid (11" x 17"), legal, letter, executive, 3" x 5" index cards, 4" x 6" and 5" x 7" photo paper, A3, A4, A5, A6, B5, C5, DL, Com 10, Monarch envelopes, and banners (up to 12.9" x 47.24")  |
|                       | Paper Weight                  | Trays 1 thru 5 – 17 lb. bond–80 lb. cover (64–216 gsm); Multi-purpose tray – 17 lb. bond–120 lb. cover (64–307 gsm); Duplex – 20 lb. bond–65 lb. cover (75–188 gsm) for letter and tabloid sheets  |
|                       | Duplex (2-sided) Printing     | Optional   |
|                       | Paper Feeding                 | Auto Media Detect, Auto Paper Tray Select, Paper Empty Sensor, Paper Low Sensor  |
|                       | Paper Output                  | 500 sheets, face down; 200 sheets, face up   |
| <b>Environmental</b>  | Size (WxDxH)                  | Printer and Delivery Conveyor Belt: 112.0" x 24.6" x 50.5" (284.5 cm x 62.5 cm x 128.3 cm)   |
|                       | Weight                        | Printer: 152 lb. (69.0 kg) with consumables  |
|                       | Temperature/Humidity          | Operating: 50°F to 89.6°F (10°C to 32°C), 20% to 80% RH; Storage: -4°F to 113°F (-20°C to 45°C), 10% to 90% RH   |
|                       | Power Consumption             | Operating – Typical 780W, Peak <1500W; Standby 200W (average); Power Save 33W  |
|                       | Noise Level                   | Operating – 54dB(A) or less; Standby: 42dB(A) or less; Power Save: 28dB(A) (background level)  |
| <b>Warranty</b>       | Limited Warranty              | Printer and Conveyor Belt: 2-Year On-Site <sup>2</sup> ; 5-Year Digital LED Printheads   |

| Product                 | Description                                  | Part Numbers     |                    |                   |                  |
|-------------------------|--|------------------|--------------------|-------------------|------------------|
| pro900DP                | Digital Color Press                          | 120V – 91661401  | 230V – 91661402    |                   |                  |
| <b>Toner Cartridges</b> | CMY: 16,500 pages <sup>3</sup> (Est. Life)   | Cyan – 52124003  | Magenta – 52124002 | Yellow – 52124001 |                  |
|                         | Black: 18,500 pages <sup>3</sup> (Est. Life) | Black – 52124004 |                    |                   |                  |
| <b>Image Drums</b>      | 42,000 pages <sup>4</sup> (Estimated Life)   | Cyan – 56125003  | Magenta – 56125002 | Yellow – 56125001 | Black – 56125004 |
| <b>Transfer Belt</b>    | 100,000 pages (Estimated Life)               | 42931602         |                    |                   |                  |
| <b>Fuser Unit</b>       | 100,000 pages (Estimated Life)               | 120V – 42931701  | 230V – 42931702    |                   |                  |
| <b>Waste Toner Box</b>  | 30,000 pages (Estimated Life)                | 42869401         |                    |                   |                  |

<sup>1</sup> Published performance results based on laboratory testing. Individual results may vary.

<sup>2</sup> Available in the U.S. only.

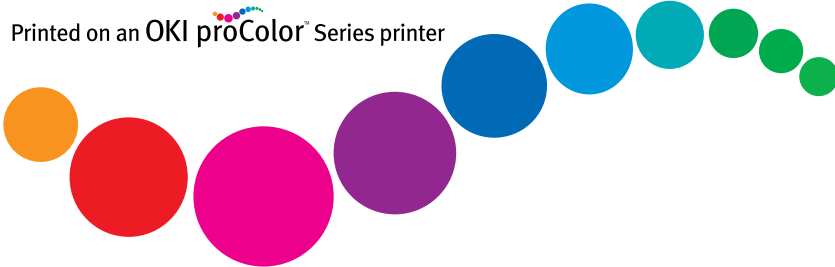
<sup>3</sup> Letter/A4 at 5% coverage. Ships with 7,500-page "starter" toner cartridges.

<sup>4</sup> Based on 500 pages/job.

**Important Consumables Information:** This product has been designed and engineered to operate only with genuine Oki Data Americas, Inc. consumables. Use of non-genuine consumables will result in the loss of certain printer enhancements, such as Auto Color Balance and Toner Sensor gauge.

**For more information on Digital Color Printers and Supplies from Oki Data Americas, Inc.: 1.800.OKI.DATA (800.654.3282).**

Printed on an OKI proColor™ Series printer



Specifications are subject to change without notice.

Featured products may not be available in all countries. Please contact your local office for regional availability.

© 2010 Oki Data Americas, Inc. OKI Reg. T.M., Reg. T.M., Oki Electric Industry Co., Ltd. HD Color logo T.M., Single Pass Color T.M., Oki Data Corp. proColor logo T.M., Oki Data Americas, Inc. PCL Reg. T.M., Hewlett Packard Co. EFI, Fiery, SmartRIP Reg. T.M., EFI Spot-On, EFI Hot Folders T.M., EFI Inc. Microsoft, Windows, Vista Reg. T.M., Microsoft Corp. Intel, Celeron Reg. T.M. Intel Corp. PostScript Reg. T.M., PostScript 3 T.M., Adobe Systems, Inc. NetWare Reg. T.M., Novell Inc. Mac Reg. T.M., Apple Inc. PANTONE Reg. T.M. Pantone LLC

Printed in the USA  
MS15597-0110

**OKI DATA AMERICAS, INC.**

**USA**

2000 BISHOPS GATE BLVD.

MOUNT LAUREL, NJ 08054-4620

TEL: 800.OKI.DATA (800.654.3282)

FAX: 856.222.5320

[www.okidata.com/procolor](http://www.okidata.com/procolor)

