

CRON- ECRM Online Punch Bridge

Online Punch Bridge

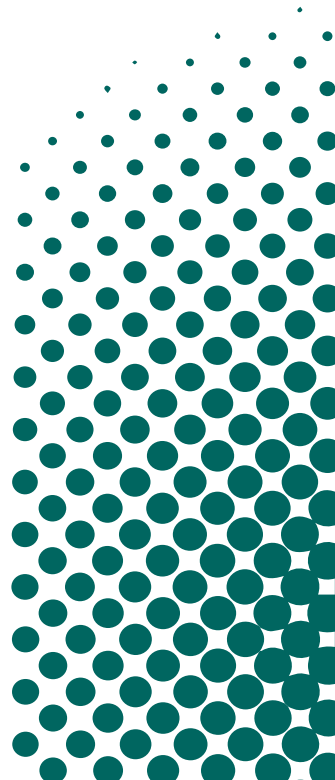
Models : 66"/72" 46" 36" 26"



| | BGP-26 series | BGP-36-D3 | BGP-36-D4 |
|--------------------------------------|---|-----------------------|-----------------------|
| Punching | | | |
| Repeat positioning accuracy | 0.01 mm | | |
| Air supply mode | external air supply (>0.3MPa) | | |
| Plate output direction | 3 or 4 directions (optional) | | |
| Punching die standard | BACHER punching system / customer request | | |
| Punching mode | air pressure punching | | |
| Control mode | | single machine | online |
| Plates | | | |
| Max.Plate size | 670 X 560 mm | 925 X 670 mm | 925 X 670 mm |
| Min.Plate size | 240 X 320 mm | 240 X 320 mm | 240 X 320 mm |
| Plate thickness | 0.15-0.40 mm | 0.15-0.40 mm | 0.15-0.40 mm |
| Power & Working condition | | | |
| Power supply | single phase AC 220±5% 50/60Hz | | |
| Rated power | 800 W | | |
| Operation temperature | 18~26°C | | |
| Range humidity | 40~60% (no condensation) | | |
| Size & Weight | | | |
| Dimension (L x W x H) | 1500 X 950 X 1050 mm | 1800 X 1170 X 1050 mm | 1800 X 1170 X 1050 mm |
| Net weight | 200 kg | 200 kg | 200 kg |

| | BGP-46-D3 | BGP-46-D4 | BGP-72 series |
|--------------------------------------|---|-----------------------|-----------------------|
| Punching | | | |
| Repeat positioning accuracy | 0.01 mm | | |
| Air supply mode | external air supply (>0.3MPa) | | |
| Plate output direction | 3 or 4 directions (optional) | | |
| Punching die standard | BACHER punching system / customer request | | |
| Punching mode | air pressure punching | | |
| Control mode | | | |
| Plates | | | |
| Max.Plate size | 1160 X 940 mm | 1160 X 940 mm | 1850 X 1422 mm |
| Min.Plate size | 450 X 370 mm | 450 X 370 mm | 650 X 550 mm |
| Plate thickness | 0.15-0.40 mm | 0.15-0.40 mm | 0.15-0.40 mm |
| Power & Working condition | | | |
| Power supply | single phase AC 220±5% 50/60Hz | | |
| Rated power | 800 W | | |
| Operation temperature | 18~26°C | | |
| Range humidity | 40~60% (no condensation) | | |
| Size & Weight | | | |
| Dimension (L x W x H) | 2050 X 1420 X 1050 mm | 2050 X 1420 X 1050 mm | 2415 X 2050 X 1200 mm |
| Net weight | 200 kg | 200 kg | 250 kg |

CRON-ECRM reserves the right to amend and correct the information.





Online Punch Bridge

The best use of working space

Multi-purpose design



Proprietary punch technology

- A 3-point registration system giving a punch accuracy of 0.01mm.
- Multiple punch module capability on every system.
- 4-direction bridge enables multiple CTPs or processing systems to be fully integrated inline.

CRON-ECRM, LLC.

554 Clark Road
Tewksbury MA USA 01876

Tel: 978.674.6225
www.cron-ecm.com

Fax: 978.640.9757
E-mail: info@cron-ecrm.com