

SPECIFICATIONS

Model	250		500			1000		
Printhead	Ricoh Gen6	Kyocera KJ4A	Ricoh Gen6	Kyocera KJ4A		Ricoh Gen6	Kyocera KJ4A	
Quantity of printheads	2-4 (Single row)	2-4 (Single row)	2-8 (Double rows)	2-8 (Double rows)	4-10 (Double rows/Symmetric array)	2-8 (Double rows)	2-8 (Double rows)	4-10 (Double rows/Symmetric array)
2 Pass	511	565	896	1220	1900	1096	1343	2494
6 Pass	201	321	438	501	640	494	651	1306
9 Pass	135	255	300	430	550	339	465	869
12 Pass	106	198	244	300	450	276	366	623
24 Pass	53	106	126	150	200	142	203	315
Max Print speed (ft²/h)								
Max Resolution	1200 x 1200 dpi			3600 x 3600 dpi		1200 x 1200 dpi		3600 x 3600 dpi
Print mode	Unidirectional and bidirectional							
Max print area	39" x 60"		48" x 98"			62" x 122"		
Max media thickness	4 in							
Media type	Rigid and flexible flat materials							
Ink	Environmental friendly UV/LED curable ink (VOC free)							
Ink color	CMYK + Lc + Lm + W + V (only capable for Ricoh heads)							
Image format	Adobe Postscript Level 3, PDF, JPEG, TIFF, EPS, AI							
Machine size(LxWxH)	136" x 88" x 51"		184" x 99" x 55"			206" x 107" x 55"		
Machine net weight	1257 lbs		2535 lbs			3197 lbs		
Shipping weight	2183 lbs		3847 lbs			4762 lbs		
Power supply	220 - 230 VAC. 60Hz 30 AMP (single phase)							
RIP support	Caldera, Onyx							
UV Curing	UV lamps, LED							
Environment	Separated workroom in good cleaning and ventilated condition, avoid direct sunlight Temperature: 64°F - 86°F (18° C – 30° C) Constant Humidity: 45%-70%							



250 / 500 / 1000 Flatbed

True flatbed architecture for accurate double-sided, full-bleed prints.

- Precise high-speed printing with up to 10 colors in high-resolution
- Designed to meet the requirements of today's short run, on demand printing
- Engineered for easy maintenance and operation
- Improved ink delivery to minimize waste and maximize output



CET Color, Inc.
Address: 4450 Commerce Dr. SW, Atlanta, GA 30336
Main: 404-228-1259 Support: 404-505-1890
E-mail: info@cetcolor.com.
www.cetcolor.com

250 Flatbed

3.25' X 5' MEDIA AREA

500 Flatbed

4' X 8' MEDIA AREA

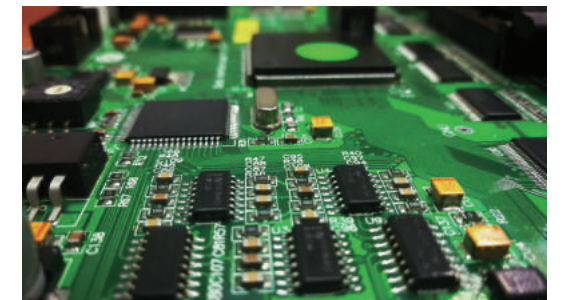
1000 Flatbed

5' X 10' MEDIA AREA

- 1 Automatic negative pressure system**
Negative pressure is automatically controlled through control software.
- 2 Ricoh Gen6 Print Heads**
Featuring variable dots, true grayscale imaging 5, 10, and 15pl.
- Kyocera Print Heads**
Featuring variable dots, true grayscale imaging 4, 6, and 10pl.
- 3 LED curing lamps**
Adjustable LED curing system allows for printing on heat sensitive media.
- 4 Auto Height Detection System**
Automatically detects the height of media up to 4in thickness and calibrates print heads distance for variable dot placement and image quality.
- 5 Emergency Stop Switches**
Quick stop operation for emergency situations.
- 6 Power vacuum & Lamp Switch**
Switches for vacuum table and lamps.
- 7 Mechanical Pin Registration System**
Pin registration for accurate and consistent rigid media placement.
- 8 Reversible Vacuum Valve**
Reverse the air vacuum for easier rigid media loading and unloading.



- 9 Reversible printing function & Repeat printing mode**
Both reversible and repeat printing mode enables a higher efficiency in production.
- 10 Static suppression**
Dual static suppression kit that eliminates static on the substrate.
- 11 On Board Control Module**
Independent control module with rich functions that are user friendly and efficient.



Self-developed, customized driver and PCB board

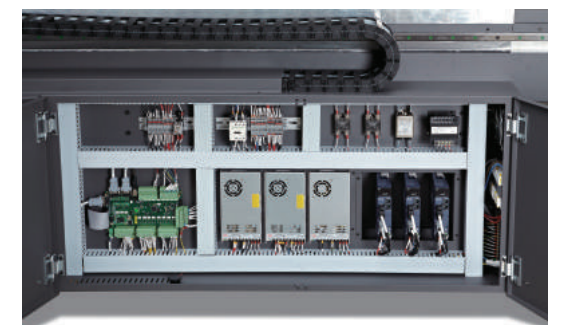
Kyocera KJ4A Printhead

Nozzle quantity : 2656
Pico-litter : Variable 4-6-10pl
Max Operating Frequency : 30Khz
Effective Print Width : 112.35mm



Ricoh Gen6 Printhead

Nozzle quantity : 1280
Pico-liter : Variable 5-10-15pl
Max Operating Frequency : 50Khz
Effective Print Width : 54.1mm



Conveniently designed industrialized wiring